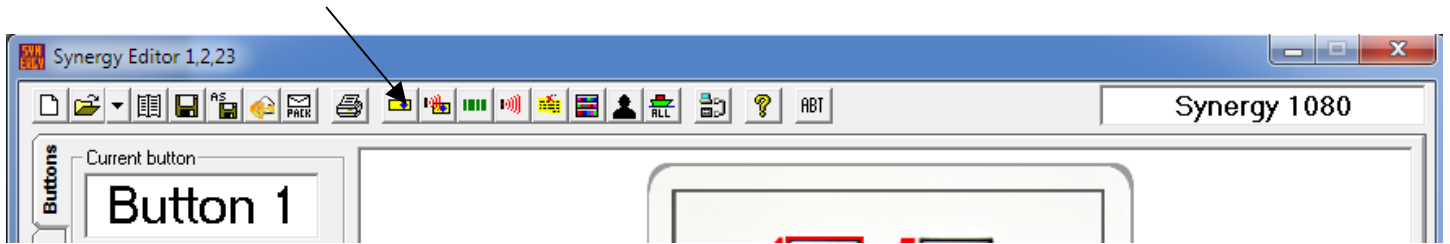
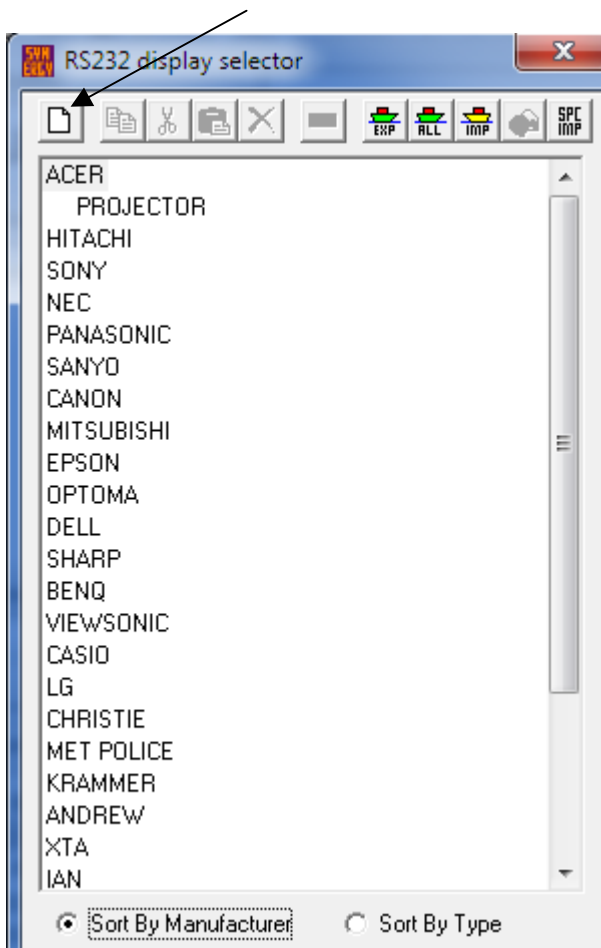


How to add an entry into the database for the Synergy software.

1. Click on this button

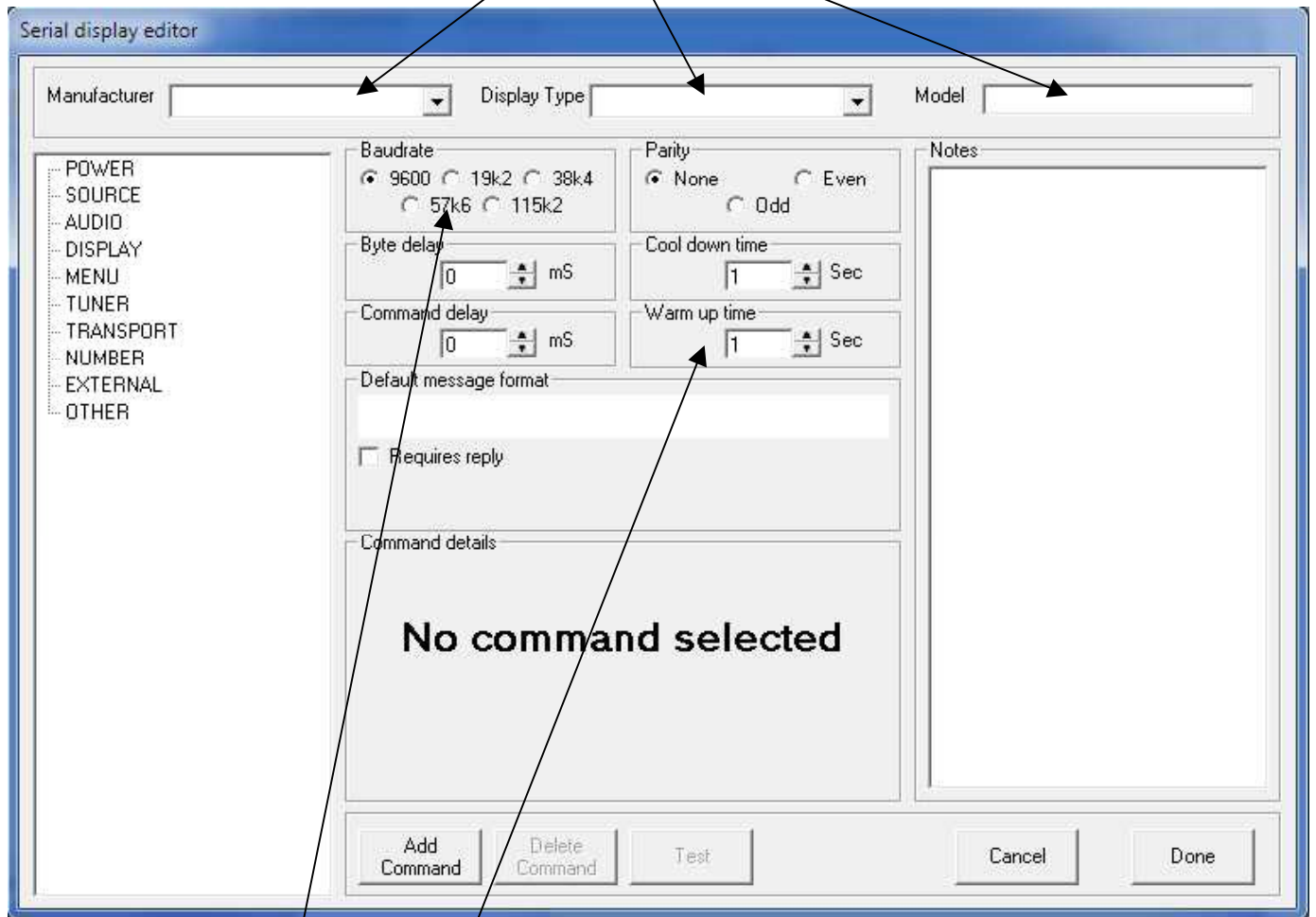


2. A window will open and to create a new entry
Click on this button



3. A new window will open up to enable you to create the new entry in the database

Write in the boxes show for the manufacture, type and model



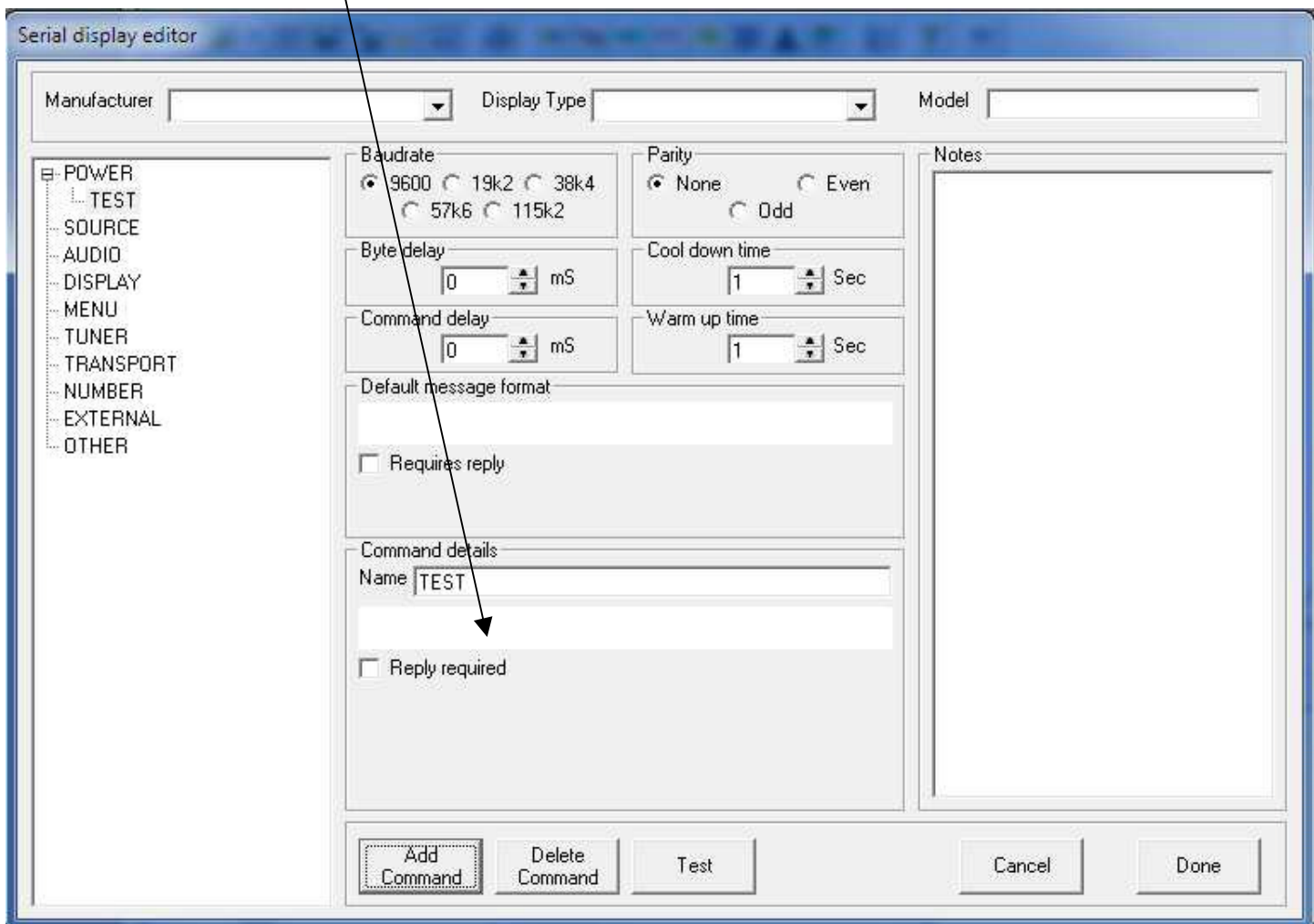
4. Also set the baud rate and the timers

5. Now you will need to add the RS232 commands. This is done by clicking on the Add Command button.

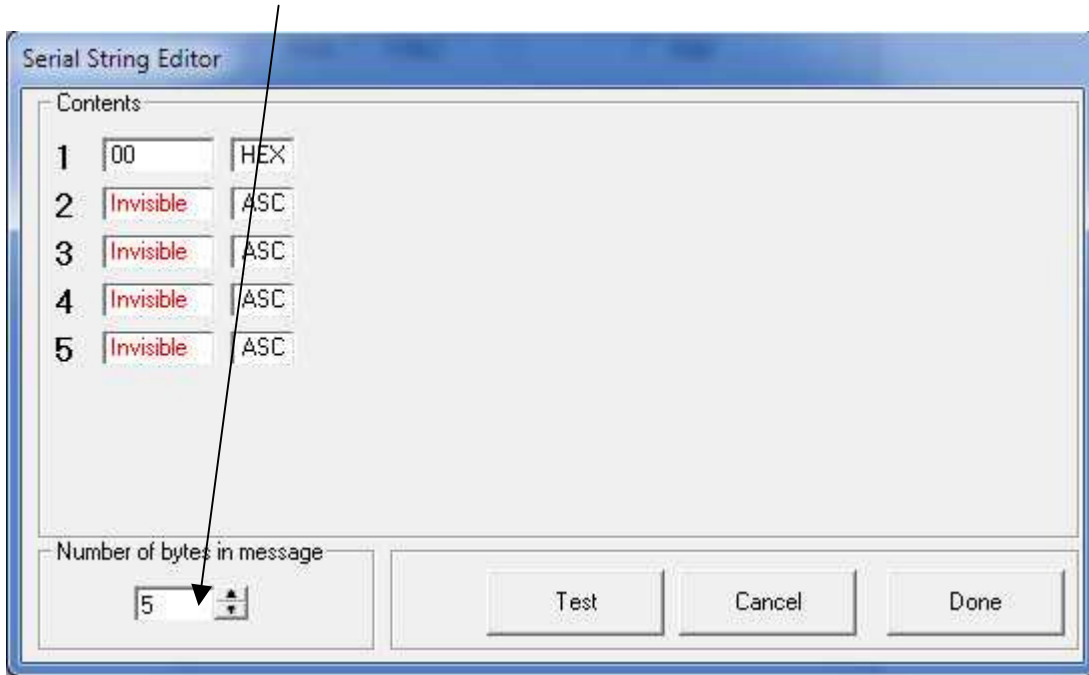
6. A new window will open where you can name the first command



7. In the main control window double click on the white box and a window will open allowing you to add the RS232 command

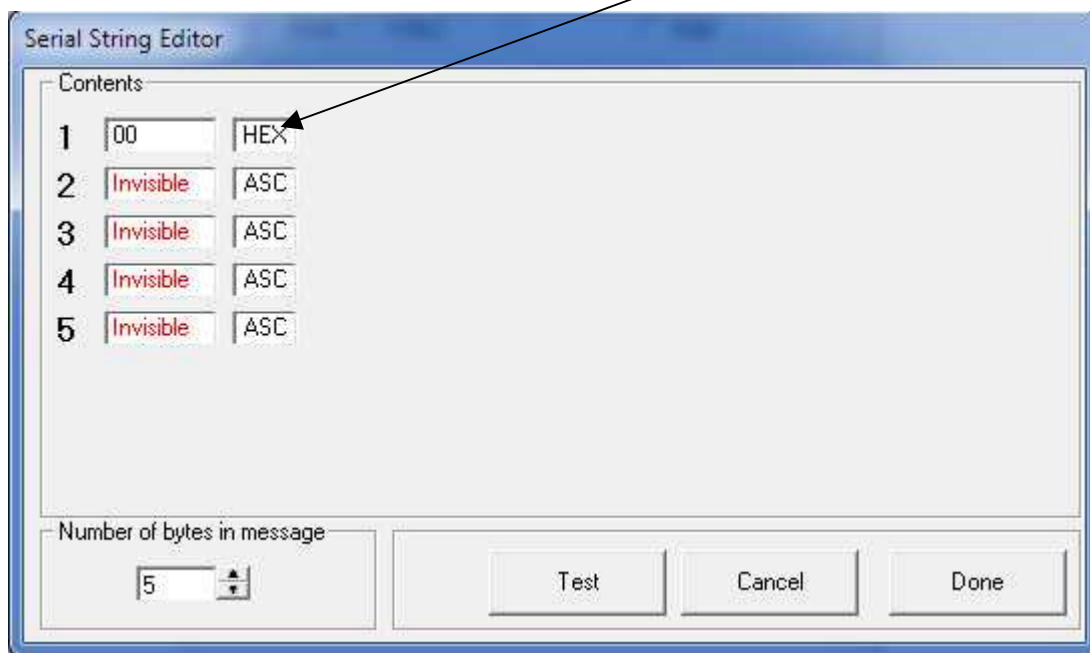


8. Add the number of byte required



and then you can enter the RS232 commands in the correct format. E.G Hex, Ascii, etc.

The boxes are set to ASCII as default, to change this left click and hold to open a dropdown menu which will allow you to change the format.



Once the RS232 command has been entered click Done.

Then click Add Command again to enter another command

Click on Done in the main window to save the entry into the database.

Once this is done you can now create your new program.