

How to import the RS232 Projector Display Database into the SPC software.

Go to the “SPC” page or the “Software Configuration page” on the iKON AVS web site

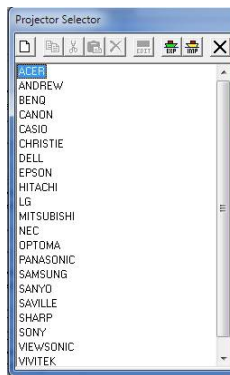
On the SPC page select the “Downloads” tab


Click on the “ProjectorDatabaseMay-2011.ikd” link and save this file onto your computer.

Open the SPC SC-AMP Editor Software.

Click on the “Edit” button 

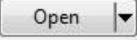
A window will open called “Projector Selector”



Within this window click on the Import button 

A window will open where you can search your computer for the saved “ProjectorDatabaseMay-2011.ikd”



Navigate to the saved “ProjectorDatabaseMay-2011.ikd” and click on the open button 

The RS232 Projector Database will now be imported for use into the SPC software